

elproLOG MONITOR

Version 3.50

Getting Started



Prior installation of a new release, the former release must be deinstalled!

Index

	Page
Introduction	2
1 Hardware requirements	3
2 Installation	3
3 Start of the Software	3
4 elproLOG MONITOR - Windows	4
5 Functions and Icons (Over view)	5
Revision History	7



Introduction

elproLOG MONITOR software provides an interface for retrieving, displaying and automatic saving data from the datalogger network.

- Enables you to specify a data collection schedule for each group
- Displays and continually updates the last values for a group of dataloggers
- Automatic data saving into an mdf-file, readable by elproLOG software (21CFR11 compliant file)
- Provides alarm information of each individual device
- Provides several alarm handling and data recording features e.g. alarm log file

- Hint 1:** - To run the elproLOG MONITOR software successfully you first have to define a group of loggers that shall be monitored! This group definition has to be made with the elproLOG CONFIG software.
- For a sample file of an elproLOG CONFIG group file see: Program / elpro / elproLOG CONFIG / Samples / Group-Demo.gcf
 - To make changes in the cfg-file active – restart elproLOG MONITOR

Hint 2: The datalogger ECOLOG-NET is not able to respond to multiple accesses at the same time. If you are going to use elproLOG MONITOR, elproLOG ANALYZE or elproLOG CONFIG software, you might get a communication error for cases where both software access the datalogger at the same time!

1. System Requirements

Operating system	2000 SP4, XP or Vista
Processor system PC	Pentium 1.5GHz
Memory min:	512 MB RAM
Hard disk space min:	150MB
Monitor	800 x 600 Pixel

2. Installation

You are going to need local administrator rights for the installation.

3. Start of the Software

At the first start of the elproLOG MONITOR software, you are asked for some basic settings, see Chapter 1, Configuration in the elproLOG MONITOR manual SM3001E on your CD-ROM. After the basic settings have been made, the elproLOG MONITOR software brings up the main window and starts automatically with the monitoring task.

Changes in the basic settings may be made by the following two functions: "Tools - Options - Basic Settings" or "Group - Settings".

4. elproLOG MONITOR-Windows

Sensor based representation

Sensor name	Sensor no	Sensor value	Sensor unit	Logger name	Logger id
Defreezing	D1	0	off	Monitoring Logger Store B2	7437
Door	D2	0	alarm	Monitoring Logger Store B2	7437
Humidity Store B2	S2	39.0	%	Monitoring Logger Store B2	7437
Temperature Store B2	S1	24.8	°C	Monitoring Logger Store B2	7437

Remaining time: 00:00:42 Cycle time: 00:01:00 Waiting...
Next autosave: 05.07.2007 23:00

Logger based representation

Logger	S1	S2	S3	S4	S5	S6	S7	S8	D1	D2
Monitoring Logger Store B2 ID: 7437	Temperature S 26.9 °C	Humidity Store 34.7 %							Defreezing 0 off	Door 0 alarm

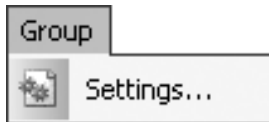
Remaining time: 00:00:24 Cycle time: 00:01:00 Waiting...
Next autosave: 05.07.2007 23:00

Cycle time This is the time between two scans
 Remaining time This is the time left, till the next scan will be done
 Next autosave Date and time for the next reading of the autosave function

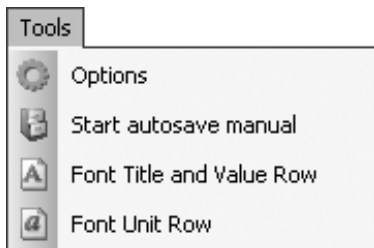
5. Functions and Icons (Over view)

The following functions are available in the elproLOG MONITOR software:

File Open / Close of group files



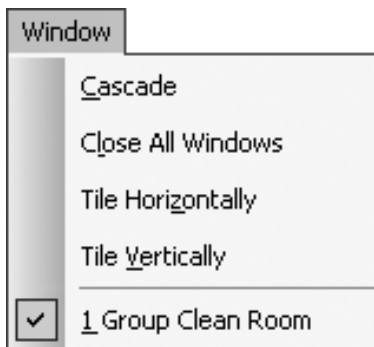
- Settings:
Used to change the monitored group or to define the cycle time for each defined group independently. After a restart of the program, the last selected groups will be monitored automatically.



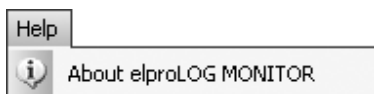
- Options:
This function is used for all possible program settings, see SM3001E for more details

- Start autosave manual:
this function is used for the configuration of the autosave function, see SM3001E

- Font....:
Use these settings to match the used fonts of the main window



- Window:
Function to organize your screen



About elproLOG MONITOR: detailed information about the installed software version



Switches the local(pc), acoustic alarm off



Used to open the alarm window

This icon is going to blink red, as soon as an alarm has been released. It stays active till the alarm has been confirmed even the alarm has vanished

Revision History

Author	Date	Version	Comment
A.Gubler	10.07.2007	--	first edition; replaces chapter 4 & 5 of EN6002Ej

Head Office:
ELPRO-BUCHS AG
Langäulistrasse 62
CH-9471 Buchs / SGS
Switzerland
email: swiss@elpro.com



ELPRO-BUCHS SA
Route de Grandvaux 26
CH-1096 Cully
Suisse
email: swiss@elpro.com



ELPRO MESSTECHNIK GmbH
Baumwasenstrasse 20/1
D-73614 Schorndorf
Deutschland
email: brd@elpro.com



ELPRO Services Inc.
P.O. Box 727
210 Mill Creek Road
Marietta, Ohio 45750
U.S.A
email: usa@elpro.com

www.elpro.com