



HAMSTER-E The small datalogger



The ELPRO dataloggers of the HAMSTER-E series are optimized for recording temperature and relative humidity. The data is stored in the datalogger's internal memory and can be loaded to the PC easy and quick via serial interface or USB. A small optical cable adapter is used for the data transfer. As a result, the communication interface is kept absolutely water-resistant.

HAMSTER-E ET1



Part No. 4901 HAMSTER-E ET1



- Temperature recording with internal probe
- Measuring range: -40°C .. +70°C
- Alarm and status with LED in small window
- «Battery low» display
- Robust, shock resistant casing; easy to mount with lockable mounting bracket
- IP 67-sealed (dustproof, temporary submersion in water possible)
- Casing dimensions: 64 x 93 x 27 mm

HAMSTER-E ET1-D



Part No. 4904 HAMSTER-E ET1-D



- Temperature recording with internal probe
- Measuring range: -30°C .. +55°C
- Large 2 line display
- Alarm and values in display
- «Battery low» display
- Robust, shock resistant casing; easy to mount with lockable mounting bracket
- IP 65-sealed (dustproof, protection against water jets)
- Casing dimensions: 64 x 93 x 27 mm

HAMSTER-E ET2



Part No. 4902 HAMSTER-E ET2



- Temperature recording with 2 external probes
- Measuring range: -90°C .. +260°C
- Temperature range for the datalogger: -30°C .. +55°C
- Principle of measurement: 2-wire PT1000 in accordance with IEC751 / EN60751
- Large 2 line display
- Alarm and status in display
- «Battery low» display
- Robust, shock resistant casing; easy to mount with lockable mounting bracket
- IP 65-sealed (dustproof, protection against water jets)
- Casing dimensions: 64 x 93 x 29 mm

HAMSTER-E EHT1



Part No. 4903 HAMSTER-E EHT1



- Temperature and relative humidity recording
- Measuring range: Temperature: -30°C .. +55°C Relative humidity: 5% .. 95%
- Universal probe mounted at unit
- Large 2 line display
- Alarm and status in display
- «Battery low» display
- Robust, shock resistant casing; easy to mount with lockable mounting bracket
- IP 30-sealed (protected against solid foreign bodies 2.5 mm diameter)
- Casing dimensions: 64 x 93 x 43 mm

APPLICATIONS



Monitoring food industry processes
Using ELPRO datalogger systems as tools to document temperatures in HACCP processes.



Documenting transport conditions
Logging temperatures during low-temperature and refrigerated transports.

Wide variety of applications:

- Transport of deep-frozen goods
- Warehouses, cold-storage warehouses
- Cold storage areas for fresh food products
- Display cases and store rooms for meat products
- Museums and galleries
- Technical processes
- Air-conditioned areas

TECHNICAL DATA

- Memory for 32'000 data points
- Small current consumption with typical battery lifetime of 2-3 years
- Batteries user replaceable
- Recording interval programmable from 10 s - 24 hrs
- Start/Stop and loop memory mode

Measuring Range / Accuracy Temperature

| | Measuring Range | Resolution | Accuracy |
|-----------------------------|-----------------|------------|----------|
| ET1 (internal probe) | -40°C .. +70°C | 0.2°C | ± 0.5°C |
| ET1-D (internal probe) | -30°C .. +55°C | 0.2°C | ± 0.5°C |
| ET2 (ext. probe class B) | -50°C .. +100°C | 0.2°C | ± 0.5°C |
| | -90°C .. +260°C | 0.2°C | ± 1.0°C |
| EHT1 (int. universal probe) | -30°C .. +55°C | 0.2°C | ± 0.5°C |

Measuring Range / Accuracy relative humidity

| | Measuring Range | Resolution | Accuracy |
|-----------------------------|-----------------|------------|----------|
| EHT1 (int. universal probe) | 5%rH .. 95%rH | 0.2%rH | ±3%rH |

TEMPERATURE PROBES



Part No. 4960
PT1000 DIN A plug-on temperature probe, -30° .. +55°C, can be plugged directly to Hamster-ET2 logger



Part No. 4950-SLxx
PT1000 DIN A temperature probe; soft rubber, watertight, -90° .. +105°C, LS = 20 mm, D = 5 mm, cable length 3 m or 10 m



Part No. 4953-SLxx
PT1000 1/3 DIN B universal temperature probe, -50° .. +180°C, LS = 50 mm, D = 6 mm, silicone cable length 2 m or 10 m



Part No. 4951-SL04
PT1000 DIN A temperature probe, 0° .. 260°C, for dry applications only, LS = 50mm, D = 6mm, glass fiber cable length 4 m



Part No. 4952-SL03
PT1000 1/3 DIN B needle temperature probe, -50° .. +180°C, with handle, LS = 100mm, D = 4mm, silicone cable length 3 m



Part No. 4956-L0
PT1000 DIN A ML temperature probe, -90° .. +260°C, LS = 350 mm, D = 3mm, bendable, Tmax connector = 90°C, without cable

Part No. 4957-L0
PT1000 DIN A ML temperature probe, -90° .. +260°C, LS = 150mm, D = 3mm, bendable, Tmax connector = 90°C, without cable

ACCESSORIES



Part No. 4910
Wall bracket for the Hamster-E, lockable, including padlock



Part No. 4912
PC data cable for Hamster-E, for PC evaluation, RS232, DB9

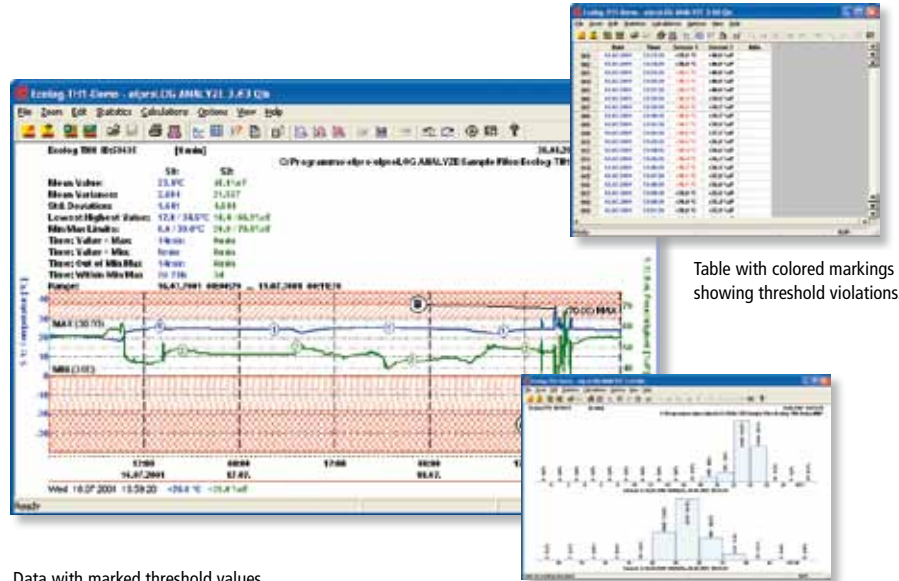
Extension cables for 4956 / 4957

Part No. 4915-S02
Extension cable PT1000, 3-wire, L = 2m, connector M8x1 f/f, Tmax = 90°C

Part No. 4915-S05
Extension cable PT1000, 3-wire, L = 5m, connector M8x1 f/f, Tmax = 90°C

elproLOG ANALYZE Software

The **elproLOG ANALYZE** software can be used for all ELPRO datalogger models, allowing fast and efficient evaluation of logged data. With **elproLOG ANALYZE** and a few mouse clicks, you can create meaningful and clearly laid out documentation of your climatic values in graph or table format. While observing regulatory compliance to FDA 21 CFR Part 11, GMP, GAMP 5, GLP and Annex 11, the validated **elproLOG ANALYZE QLS** software offers you all the security you need for monitoring your regulated environments.



Data with marked threshold values and statistic information.

Table with colored markings showing threshold violations.

Histogram with manual or automatic grouping.

SERVICE & QUALITY

- ISO 9001 quality system
- SCS calibration laboratory
- Vendor and internal audits
- Expert systems
- Own production and development
- Calibration according to all standards (ISO 17025)
- Customer calibration service
- Modern facilities
- Datalogger service since 1989
- Repair service
- IQ/OQ qualifications
- Temperature mapping service
- Worldwide distributors
- Return of ELPRO instruments and batteries for eco-friendly disposal








DIRECTIVES & STANDARDS

- ISO 9001: 2008**
SGS certificate no. CH98/0013
- ATEX**
SNCH 01 ATEX 3280/Directive 94/9/EC
- EX1, CE1258**
Approval for EX protection zone 1 (EN50014:1997 +A1 +A2, EN 50020:2002 and EN1127-1:1997)
- CE**
EN61000-6-2:2001 and EN61000-6-4:2001
- EN12830/EN13485/EN13486**
Temperature recorder for transport, storage and distribution of foodstuffs
- GZ1480**
Exceptional approval for calibration GZ1480/2000 from 10.4.2000, BEV, Austria

INTEGRATED REGULATIONS AND RECOMMENDATIONS

- GMP/GLP/GAMP 5**
Software validation in accordance with 21 CFR Part 820, Electronic Records 21 CFR Part 11, 21 CFR Part 210/211, 21 CFR Part 110, 21 CFR Part 58
- EG/EU**
Regulation (EC) 37/2005
Directive 2002/95/EC (RoHS)
- HACCP**
Hazard Analysis Critical Control Points

EXPLANATION OF ICONS

-   Temperature and humidity measurement
-  Display alarm
-    IP protective class
-  21 CFR Part 11



ELPRO-BUCHS AG
(head office)
CH 9470 Buchs SG
Switzerland



ELPRO Services, Inc.
210 Millcreek Road
Marietta, OH 45750
USA
T +1 740 568.9900
F +1 740 569.9399
e usa@elpro.com

ELPRO UK Ltd
Unit 1, Allen's Yard
Nyton Road
Aldingbourne, Chichester
West Sussex PO20 3UA
United Kingdom
T +44 (0)1243 544 545
F +44 (0)1243 210 132
e uk@elpro.com